

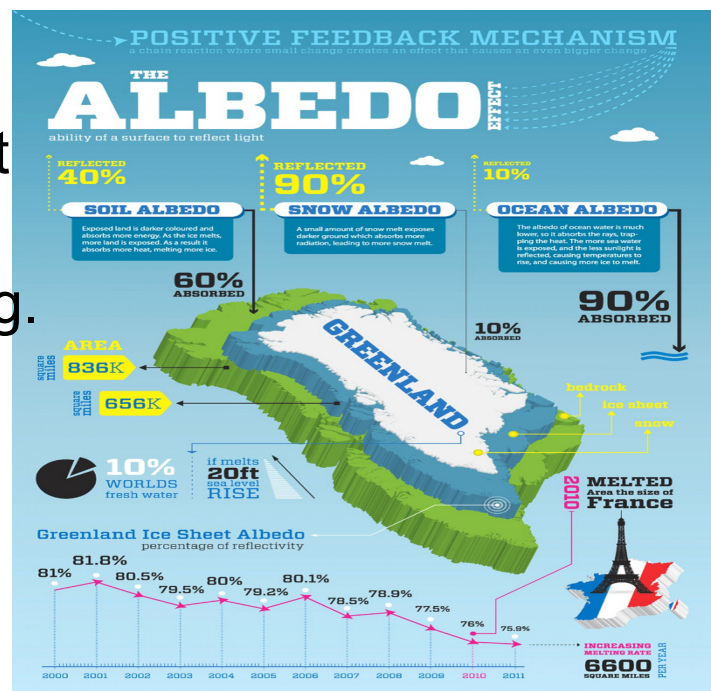
## 1.10 Albedo Effect

Albedo-is the measure of the percentage of light that an object reflects.

The higher the albedo the smaller the amount of energy that is absorbed by something.

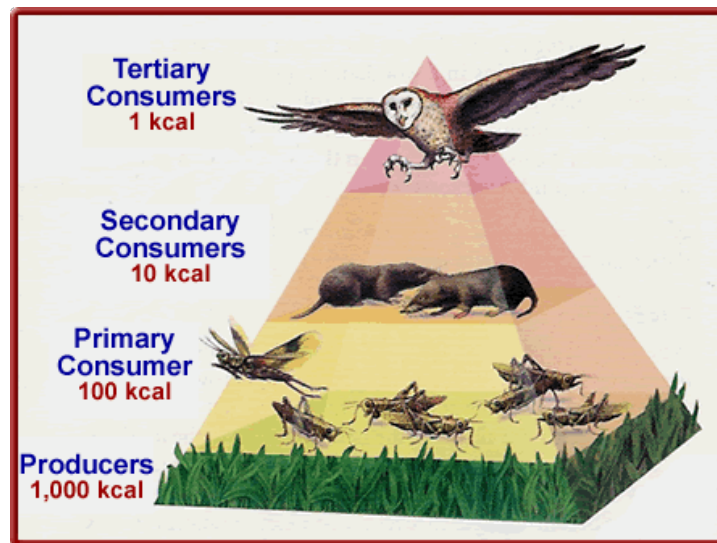
Ex: White shirt

The absorbed energy helps maintain the earth's temperature.



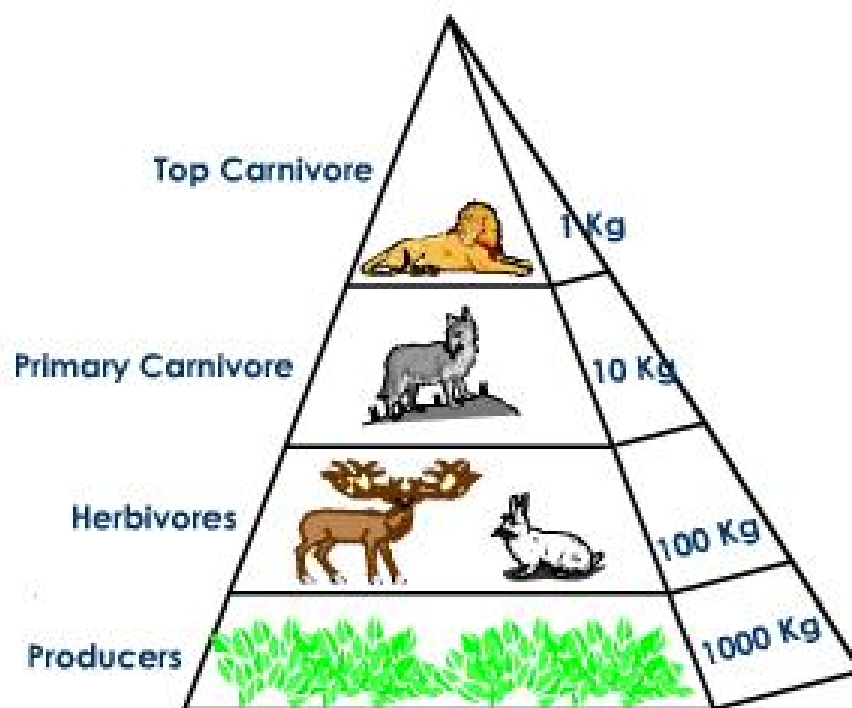
## Loss of Energy:

- As energy passes through trophic levels it becomes less.
- As we move up the trophic levels there becomes less species.



- Laws of Thermodynamics

google  
images



Upright Pyramid of biomass in a Terrestrial Ecosystem

google images

google  
images

